



# RA Biosources, Inc.

## Monoclonal Antibodies Product Catalog

Cancer Markers

Drugs-of-Abuse

Collagen and Extracellular Matrix Proteins

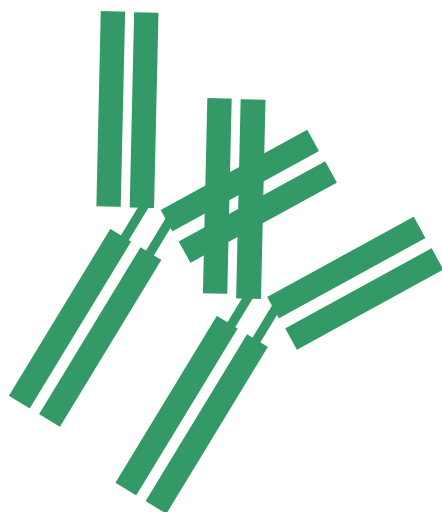
Hormones

Infectious Agents

Serum Proteins

and more

Located in Belmont, California, 94002 USA



[www.rabiosources.com](http://www.rabiosources.com)

(650) 631-8763

## Cancer Markers

Specificity	Catalog Number	Isotype
AFP - Alpha Fetoprotein	MA011	IgG1
	MA012	IgG1
	MA013	IgG1
	MA014	IgG1
B2-Microglobulin	MB031	IgG1
	MB032	IgG1
	MB033	IgG1
	MB034	IgG1
CA 12-5	MC091	IgG1
	MC092	IgG1
	MC093	IgG1
CA 15-3	MC071	IgG1
	MC072	IgG1
CA 19-9	MC061	IgG1
	MC062	IgG1
	MC063	IgG1
	MC064	IgM
CA 72-4	MC101	IgG1
	MC102	IgG1
	MC103	IgG1
CEA	MC023	IgG1
	MC024	IgG1
	MC025	IgG1
Ferritin	MF011	IgG1
	MF012	IgG1
	MF013	IgG1
	MF014	IgG2a
	MF015	IgG2a
	MF016	IgG1
HGH	MG021	IgG1
	MG022	IgG1
	MG023	IgG1
	MG024	IgG1
PAP	MP081	IgG1
	MP082	IgG1
PSA	MP010	IgG1
	MP011	IgG1
	MP012	IgG1
	MP013	IgG1
	MP015	IgG1
PSA-ACT	MP016	IgG1
Free PSA	MP014	IgG1
	MP017	IgG1

## Drugs-of-Abuse

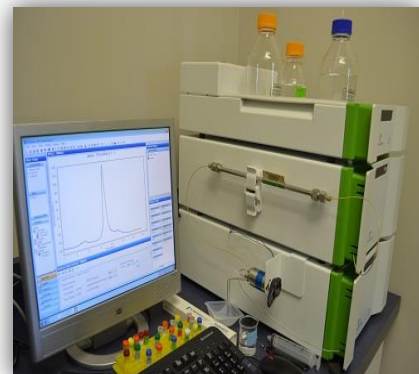
Specificity	Catalog Number	Isotype
6-Acetylmorphine	MM101	IgG1
	MM102	IgG1
	MM103	IgG1
Amphetamine	MA021	IgG1
	MA022	IgG2b
Barbiturate	MB011	IgG1
Benzodiazepine	MB051	IgG1
Benzoylcegonine	MB021	IgG1
	MB022	IgG1
Buprenorphine	MB041	IgG2a
	MB042	IgG1
Clonazepam	MC081	IgG1
	MC082	IgG1
Cotinine	MC021	IgG1
Cortisol	MC111	IgG1
	MC112	IgG1
EDDP	ME011	IgG3
	ME012	IgG1
Fentanyl	MF041	IgG1
	MF042	IgG1
K2	MK011	IgG1
	MK015	IgG1
Ketamine	MK021	IgG2b
	MK022	IgG2b
LSD	ML041	IgG1
	ML042	IgG1
	ML043	IgG1
	ML044	IgG1
Melatonin	MM091	IgG1
Methadone	MM011	IgG1
MDMA	MM031	IgG1
	MM032	IgG1
	MM033	IgG1
MDPV	MM022	IgG1
Methamphetamine	MM061	IgG1
Methcathinone	MM071	IgG2a
	MM072	IgG1
	MM073	IgG1
Methotrexate	MM081	IgG1
	MM082	IgG2a
	MM083	IgG1
Morphine	MM041	IgG1
Oxycodone	MO022	IgG1
PCP - Phencyclidine	MP021	IgG1
	MP022	IgG1
	MP023	IgG1
PPX	MP091	IgG1
	MP092	IgG1
TCA	MT031	IgG1
	MT032	IgG1
THC	MT112	IgG1
	MT113	IgG1
Tramadol	MT061	IgG2b
	MT062	IgG2b
	MT063	IgG1
	MT064	IgG1

## Collagen and Extracellular Matrix Proteins

Specificity	Catalog Number	Isotype
Collagen Type IV	MC031	IgG1
	MC032	IgG2b
	MC034	IgG2b
	MC035	IgG2a
Human Laminin	ML021	IgG1
	ML022	IgG1
	ML023	IgG1
Mouse Laminin	ML034	IgG1
Fibronectin	MF021	IgG1
	MF022	IgG1
	MF023	IgG1

## Hormones

Specificity	Catalog Number	Isotype
E3 - Estriol	ME041	IgG1
	ME042	IgG1
	ME043	IgG1
Estrogen	ME051	IgG1
FSH	MF051	IgG1
	MF052	IgG1
HCG, alpha	MH011	IgG1
HCG, free beta	MH015	IgG1
	MH018	IgG1
	MH014	IgG1
HCG intact	MH016	IgG1
	MH019	IgG1
	MH012	IgG1
LH	ML012	IgG1
PAPP-A	MP041	IgG1
	MP042	IgG1
Prolactin	MP031	IgG1
	MP032	IgG2b
	MP033	IgG1
	MP034	IgG2a
TSH	MT021	IgG1
	MT022	IgG1
	MT023	IgG1



## Serum Proteins

Specificity	Catalog Number	Isotype
CRP	MC041	IgG1
	MC042	IgG1
	MC043	IgG1
	MC044	IgG1
Human IgA	MI011	IgG1
	MI012	IgG1
	MI013	IgG1
	MI014	IgG1
Human IgE	MI031	IgG1
	MI032	IgG1
	MI033	IgG1
Human IgM	MI041	IgG1
	MI042	IgG1
	MI043	IgG1
	MI044	IgG1

## Infectious Agents

Specificity	Catalog Number	Isotype
Dengue Virus, NS1	MD021	IgG1
	MD022	IgG2a
	MD023	IgG1
	MD024	IgG1
	MD025	IgG1
Giardia	MG011	IgG1
	MG012	IgG1
	MG014	IgG2b
HBsAg	MH021	IgG1
	MH022	IgG1
	MH023	IgG2b
	MH024	IgG1
H. pylori	MH041	IgG1
	MH042	IgG2b
Zika Virus, NS1	MZ011	IgG1
	MZ012	IgG1
	MZ013	IgG1
	MZ014	IgG1
	MZ015	IgG1

Find the entire catalog at:

<http://www.rabios.com/product-catalog.html>

## Others

Specificity	Catalog Number	Isotype
C-peptide	MC051	IgG2b
	MC052	IgG1
	MC053	IgG2b
cTn I - Cardiac Troponin I	MT011	IgG1
	MT012	IgG1
	MT013	IgG1
D-Dimer	MD011	IgG1
	MD012	IgG1
	MD013	IgG1
Equine chorionin-gonadotropin	ME021	IgG1
	ME022	IgG1
	ME023	IgG1
	ME024	IgG1
EGFR	ME031	IgG1
	ME032	IgG1
FITC	MF031	IgG1
GAD65	MG031	IgG1
	MG032	IgG1
	MG033	IgG1
	MG034	IgG1
IA-2	MI081	IgG1
	MI082	IgG1
	MI083	IgG1
IGF-1	MI061	IgG1
	MF032	IgG1
	MF033	IgG1
Human Insulin	MI051	IgG1
	MI052	IgG1
	MI053	IgG1
	MI054	IgG1
Human r-Interferon	MI071	IgG1
	MI072	IgG1
MPO	MM051	IgG1
	MM052	IgG1
	MM053	IgG1
	MM054	IgG1
NGAL	MN011	IgG1
	MN012	IgG1
	MN013	IgG1
	MN014	IgG1
Pepsinogen I	MP061	IgG1
Pepsinogen II	MP071	IgG1
Thyroglobulin	MT051	IgG2a
	MT052	IgG1
Transferrin	MT081	IgG2a
	MT082	IgG1
	MT083	IgG1
Testosterone	MT041	IgG3
TPO - Thyroid Peroxidase	MT091	IgG1

# RA Biosources, Inc.

RA Biosources, Inc., is a biotech company founded by Dr. Guo on January 2003 in Belmont, California, USA. The company's main focus is the development of monoclonal antibodies as in-vitro diagnostic reagents. Through over a decade of effort, we have built a strong line of products in the areas of cancer markers, drugs of abuse, infectious agents, collagen & extracellular matrix proteins, hormones, serum proteins, and others. And we have established a solid network of customers in the United States, Europe, Canada, and China.

We have the production capacity to meet the needs of our customers and continue to develop new products as the market demands. We are firmly committed to the best possible service for our customers. Contact us for a sample or full catalog at:

278 Harbor Blvd  
Belmont, CA 94002  
United States of America  
Tel: (650) 631-8763  
Fax: (650) 631-3848  
Email: [customer.service@rabios.com](mailto:customer.service@rabios.com)

